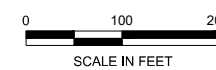


LEGEND

- EXISTING AIRPORT PROPERTY LINE
- FUTURE AIRPORT PROPERTY LINE
- LEASE BOUNDARY
- BUILDING ENVELOPE
- TWY B4 DEVELOPMENT AREA - PHASE I
- EAST DEVELOPMENT AREA - PHASE II
- COUNTY PROPERTY
- RESERVED
- TOFA



RIFLE GARFIELD COUNTY AIRPORT
RIFLE, COLORADO

DEVELOPMENT AREAS - LEASE PARCELS

ARMSTRONG

A LOCHNER COMPANY